

*"If I can't climb the stairs, who will check under the bed for monsters?"*



**Galliprant**<sup>®</sup>  
(grapiprant tablets)



**Dogs have a way of making shared moments more meaningful.** But osteoarthritis (OA) pain can affect your dog's mobility and take away from your special moments together.

**Approximately 1 in 4 adult dogs suffer from canine OA<sup>3</sup>**

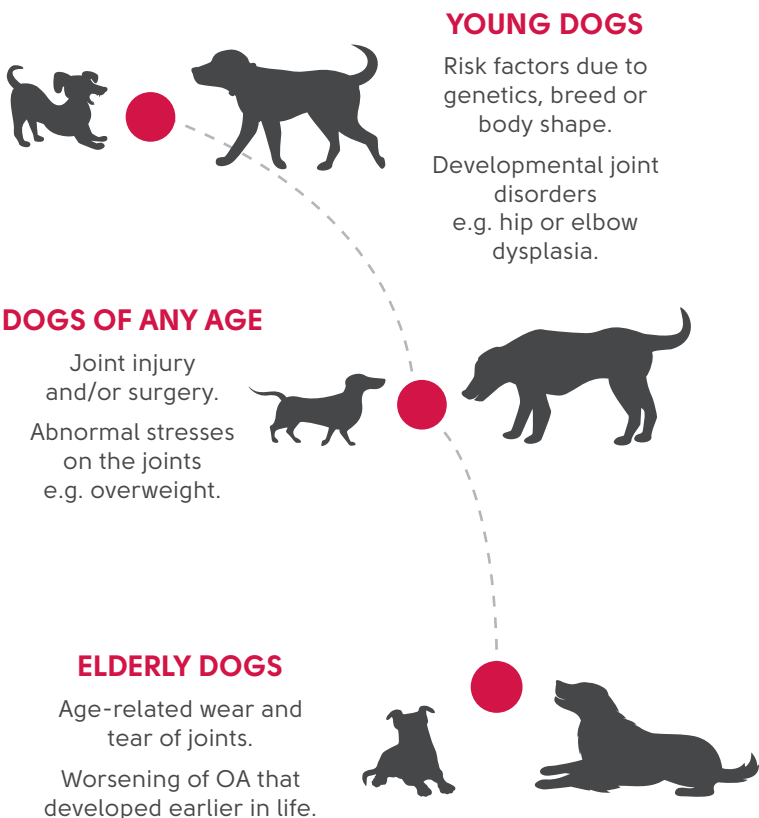
# Canine OA can begin at any time in a dog's life

## What is canine OA?

Canine OA is a progressive joint disorder and is the **most common** cause of chronic pain in dogs.<sup>1</sup> This disease gets worse over time,<sup>2</sup> making it harder for a dog to do normal everyday activities.

## When does canine OA start?

Canine OA does not just affect elderly, large breed dogs. In fact, OA often starts at a **young age**, and can affect dogs **of all sizes**. Here's **when and why** OA might start:<sup>3,4</sup>



# Canine OA can keep your dog from being active and by your side

## The signs of OA pain

The early signs of canine OA are often subtle and easy to miss. The information below will help you determine which stage of OA your dog is currently in. Even slight changes in your dog's behaviour and mood could be indicators of OA pain. Check all that apply to your dog:\*\*



### AT RISK OF DEVELOPING OA

At-risk dogs don't yet have signs of OA pain, but your veterinarian will help you understand if your dog may be more likely to develop the disease.

With regular check-ups, your veterinarian can also help you stay in control of your dog's weight and activity levels—two risk factors that can contribute to early OA.

Checklist developed with the guidance of Dr. BDX Lascelles.



### EARLY OA PAIN

#### ACTIVITIES IN GENERAL

- Done more slowly
- Sometimes looks for assistance
- Looks unsure

#### SITTING OR LYING DOWN

- More slowly or awkwardly
- Holds leg slightly out to the side

#### JUMPING or CLIMBING (e.g. stairs)

- Sometimes hesitates
- Not as 'sure-footed'

#### WALKING

- Enjoys walks but slows down sooner
- Lags behind (especially on long walks)

\*\*NOTE: This checklist is not a medical diagnostic tool and is not intended to replace a veterinarian's diagnosis. It is only intended to help with the recognition of OA pain, but the changes can also be due to other causes.

## Why treat OA pain early?

No matter how minor the changes may seem, they are too important to ignore. Even the earliest changes could indicate that your dog is struggling with **OA pain**. That pain can get worse if left untreated.<sup>1</sup>



By the time OA pain is in the later stages, it can be harder to manage.<sup>1</sup>



### LATER OA PAIN

#### ACTIVITIES IN GENERAL

- Done very carefully
- Often looks for assistance
- Looks distracted or worried

#### SITTING OR LYING DOWN

- Sometimes makes a “false start”
- Not smooth (occurs in stages)

#### JUMPING or CLIMBING (e.g. stairs)

- Cautious and/or pauses
- Less spring and harder landings
- Might slip or falter

#### WALKING

- Less interest
- Stops to rest
- Limping or stiffness (especially after more vigorous exercise)



### ADVANCED OA PAIN

#### ACTIVITIES IN GENERAL

- Very difficult/Usually avoided
- Needs assistance
- Looks frightened or stressed

#### SITTING OR LYING DOWN

- Flops or drops to the floor

#### JUMPING or CLIMBING (e.g. stairs)

- Refuses or scrambles

#### WALKING

- Refuses or only walks very short distances
- Limping and stiffness is obvious

# PROVEN OA pain relief with Galliprant®<sup>8</sup>

## Less pain and inflammation.

Galliprant controls OA pain and inflammation and can be a fundamental part of your dog's multifaceted OA management plan.

Treating OA pain and inflammation early can help your dog stay active,<sup>1</sup> so you can continue to share special moments together.



# Galliprant®

## WORKS DIFFERENTLY

### FIRST-OF-ITS-KIND targeted NSAID

Unlike traditional NSAIDs, Galliprant targets the source of canine OA pain and inflammation, while reducing the impact on kidney and liver health.<sup>5,6†</sup>

### SAFE to use daily

Galliprant is safe for daily use.<sup>7</sup> And that's good because OA is a lifelong condition.

### FROM FIRST DIAGNOSIS

The earlier OA pain is detected, the sooner your veterinarian can start your dog on treatment. Galliprant targets canine OA pain and inflammation from first diagnosis.\*

\*Approved for use in dogs older than 9 months of age and greater than 3.6 kg.

†If Galliprant is used long term, appropriate monitoring of clinical signs, hematology and serum chemistry is recommended.

## Galliprant is a once-daily chewable, flavoured tablet.<sup>7</sup>





## Don't let canine OA keep a good dog down.

A diagnosis of OA in your dog might seem like an active future is at risk. But starting a good OA management plan early can control pain and help improve your dog's mobility and strength.<sup>3</sup>

An OA management plan is made up of multiple treatment options. Important parts of the plan are pain control, exercise and weight control. Your veterinarian might also discuss additional options and will modify the plan over time, according to your dog's needs.<sup>3</sup>








**With Galliprant you're protecting the moments that matter. Continue to talk to your veterinarian about your dog's OA diagnosis and treatment.**



Your tear-off reminder

Your dog's name:

**How many tablets to give:<sup>7</sup>** Pill images are not actual size

Galliprant chewable tablet	Half tablet	Whole tablet
20 mg	 <input type="text"/>	 <input type="text"/>
60 mg	 <input type="text"/>	 <input type="text"/>
100 mg	Not scored and should not be broken in half	 <input type="text"/>

Can be given...

without food

or...

with food<sup>7</sup>

**How often:**

**1 x Daily**

**For how long:**

- Day(s)  
 Week(s)  
 Month(s)

**Don't miss a dose**

Refill prescription by

/  /

**Visit your veterinarian**

Come back for next check-up

/  /

**Let Galliprant help you manage your dog's osteoarthritis pain, so your dog can continue doing the activities that they love with you.**

The label contains complete use information, including cautions and warnings. Always read and follow label and use directions.

# Galliprant<sup>®</sup>

(grapiprant tablets)

**Protect the joy and the moments  
that matter with your dog.**

**Galliprant<sup>®</sup> is a first-of-its-kind  
targeted NSAID for canine  
osteoarthritis pain and inflammation.<sup>5</sup>**

## References

1. Epstein ME, Managing Chronic Pain in Cats and Dogs Pt 1. *Today's Vet Pract.* 2013;20-23.
2. Bland S. 2015 "Canine Osteoarthritis and Treatments: A Review." *Vet Sci Dev* 5.2:84-89.
3. Lascelles, D. 2016. "Joint pain in dogs and cats." *Intl Assoc for Study of Pain* 2016 Fact Sheet No. 9.
4. Anderson KL, et al. Risk Factors for Canine Osteoarthritis and Its Predisposing Arthropathies: A Systematic Review. *Frontiers in Veterinary Science.* 2020 Apr 28;7:220.
5. Kirkby Shaw K, et al. *Vet Med Sci.* 2016;2:3-9.
6. Rausch-Derra L, et al. *J Vet Res.* 2015;76(10):853-859.
7. Galliprant Canadian Product Label.
8. Rausch-Derra L, et al. *J Vet Intern Med.* 2016;30:756-763.

For more information about Galliprant, or if you believe your dog is experiencing an adverse drug event, speak with your veterinarian or contact Elanco Canada Limited at 1 800-265-5475.

The label contains complete use information, including cautions and warnings. Always read and follow label and use directions.